



FP-011 Auto Continuous 3-stage Powder Dissolver

Auto Continuous 3-stage Powder Dissolver

The powder make-up unit mixes up the chemical/ polymer powder and water spirally in the premixing device, by a constant dosing of powder into liquid to make-up a precise concentration of solution.

The powder dissolution is completed in a sequence of reactors with continuous mixing, aging, store and reserve by gravity flow.

Applications:

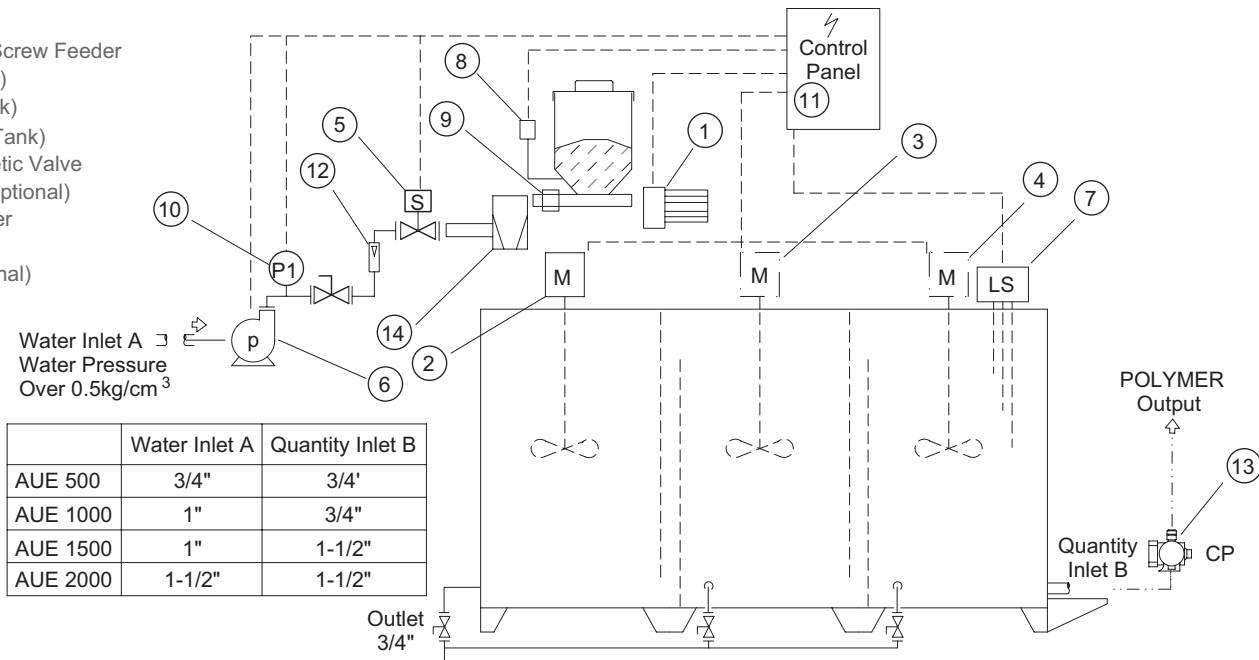
Make-up chemical powders (polymer, powdered active carbon and lime) with water to form solutions at high rates for a 24-hour continuous demand.

Features:

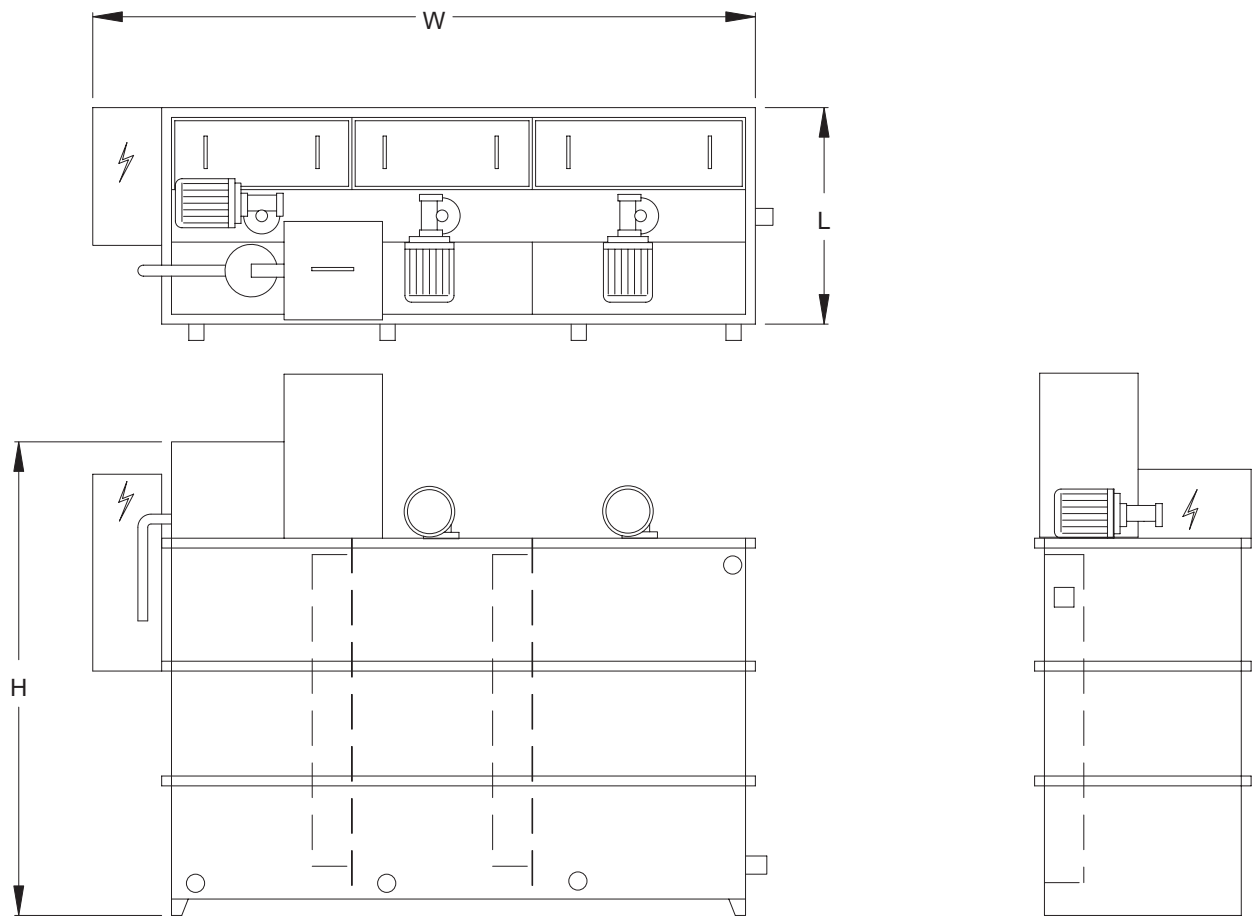
- › Automatic PLC control.
- › Auto-adjusted dosing rate to compensate unstable flow-rate.
- › "NO TOUCH" design of the mixer to prevent clogging.
- › PP or stainless steel reactor on demand.
- › Three individual reactors of mixing, aging, and storage.

Equipment Process

- ① M1 Motor of Powder Screw Feeder
- ② M2 Agitator (Mix Tank)
- ③ M3 Agitator (Ripe Tank)
- ④ M4 Agitator (Storage Tank)
- ⑤ SV1 Inlet Electromagnetic Valve
- ⑥ LS1 Pressure Pump (Optional)
- ⑦ LS2 Storage Tank Meter
- ⑧ LS3 Powder Storage Tank Meter (Optional)
- ⑨ H Heater
- ⑩ P1 Pressure Gage (Optional)
- ⑪ V1 Inlet Controller
- ⑫ Q Flow Meter
- ⑬ CP Quantity Control Pump (Optional)
- ⑭ PM Premixing Device
- Power Line
- Excluded



Equipment Drawings and Section Views



Auto Continuous 3-stage Powder Dissolver

Specifications

	AUE 500	AUE 1000	AUE 1500	AUE 2000	AUE 3000	AUE 4000	AUE 5000
Capacity (Max.)	500	1000	1500	2000	3000	4000	5000
Std. Powder Qty. (L)	25	35	35	35	100	100	150
Ext. Powder Qty. (L)	35	100	100	150	150	300	300
Dosing Rate (Kg/hr)	0.25 ~ 1.5	0.5 ~ 2	0.75 ~ 3	1 ~ 4	1.8 ~ 7	2 ~ 10	2.5 ~ 10
Pressure (Kg/cm ²)	1	2	2	2	3	3	3
Power (Kw)	2	2.5	5	5	8	8	8
Dimension (M) L×W×H	1.5×0.5×1.6	1.8×0.7×1.6	2×0.9×1.6	2x1×2	2.5×1.25×2.5	3×1.25×2.5	3×1.6×2.5
Concentration (%)	0.05 ~ 0.3 Adjustable (Customization Available by Request)						